

Summer Program: **Gross Anatomy– C2P STEM Lab**

Week Of: **June 25-28, 2018**

C2P Staff: **Sandy Friedli, Carla Carlton**

Engineering Staff: **N/A**

Summer Program Overview Planning Tool: On Campus Programs

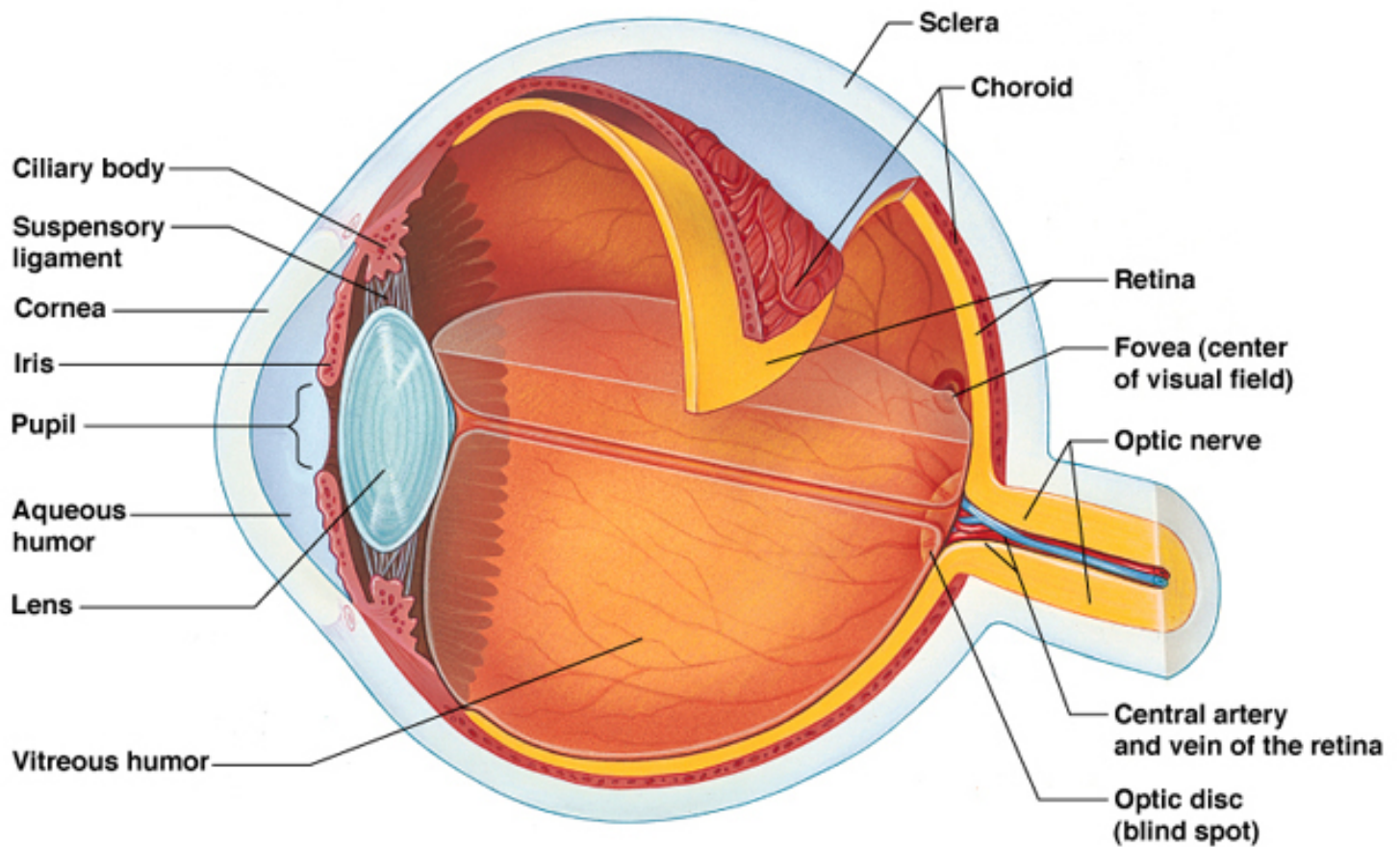
	Monday Date: 6.25.18	Tuesday Date: 6.26.18	Wednesday Date: 6.27.18	Thursday Date: 6.28.18
9AM	Welcome Lab Safety Ice Breaker	Welcome Ice breaker	Welcome Ice breaker	Welcome
9:30-11:15 am	Brain Clean up for lunch	eye Clean up for lunch	lung Clean up for lunch	9:15 am – Load bus for SEA Life Michigan-4316 Baldwin Road, Auburn Hills, MI 48326
11:30 AM-12:30PM	LUNCH	LUNCH	LUNCH	
12:30-2:30 pm	Kidney	Heart	Mortuary Science Tour 1 – 2 pm	10 – 11 am Tour Sea Life 11-12 pm- Squid Dissection @ Sea Life 12-1pm Ride bus back to WSU – 5000 Gullen Mall, Detroit, MI 48202 1-2 pm Lunch at WSU – Box lunches from Aramark
2:45-3:00 pm	Clean up	Clean up	Clean up	Clean up & Discuss Week
3:00 PM	Bus	Bus	Bus	Bus

Notes: Sea Life Michigan Aquarium, 4316 Baldwin Rd., Auburn Hills, MI 48326 - Jessica Krutell 248-409-6008 – Jessica.krutell@merlinentertainments.biz – confirmed. \$12.00 per student to paid via PO. Lunch at WSU with box lunches from Aramark – need 27 total lunches. Snacks for bus ride (to tide students over due to late lunch) provided by C2P.

Gross Anatomy	6.28.18	Life Sciences, 5000 Gullen Mall, Detroit MI 48202	9:15AM
---------------	---------	--	--------

SEA Life Michigan 4316 Baldwin Road, Auburn Hills, MI 48326	10:00AM	SEA Life Michigan 4316 Baldwin Road, Auburn Hills, MI 48326	12:00 PM	Life Sciences, 5000 Gullen Mall, Detroit MI 48202
---	---------	---	----------	--

Anatomy of the Eye Diagram

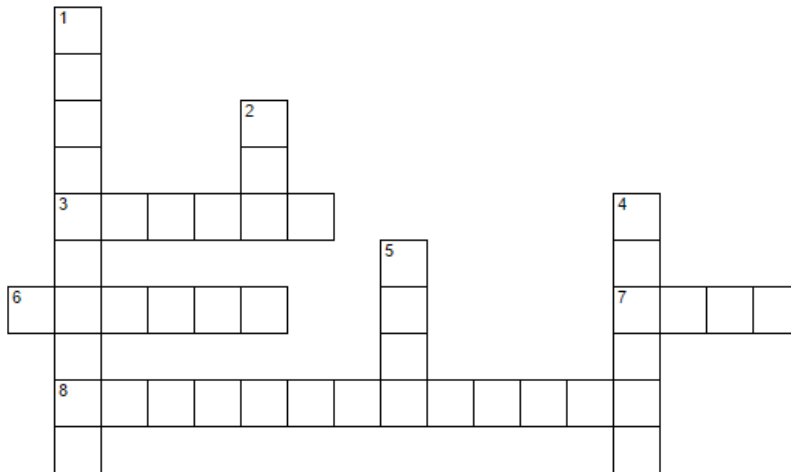


©1999 Addison Wesley Longman, Inc.

Name(s): _____

Anatomy of the Eye Vocabulary

Define the words in the word bank to match them to the definition. Write the word in the proper boxes.



ACROSS

- 3 Clear outermost layer of the eye, its job is to refract light.
- 6 The thin layer of tissue that lines the back of the eye, it receives light focused from the lens then converts it to neural signals which are sent to the brain.
- 7 Changes the focal distance of the eye to enable the images of objects of different distances to form on the retina.
- 8 The clear gel that occupies the space behind the lens and before the retina. It is clear so that light can get through the gel.

DOWN

- 1 Transfers visual information from the retina to the vision centers of the brain.
- 2 Gives us the ability to see the world in color and in three dimensions even under low light.
- 4 The white part of the eye, it forms the supporting wall of the eyeball.
- 5 A flat ringlike membrane that gives the eye its color.

Define the words in the word bank to complete the puzzle.

Word Bank: Vitreous Humor, Sclera, Retina, Optic Nerve, Lens, Iris, Eye, Cornea