

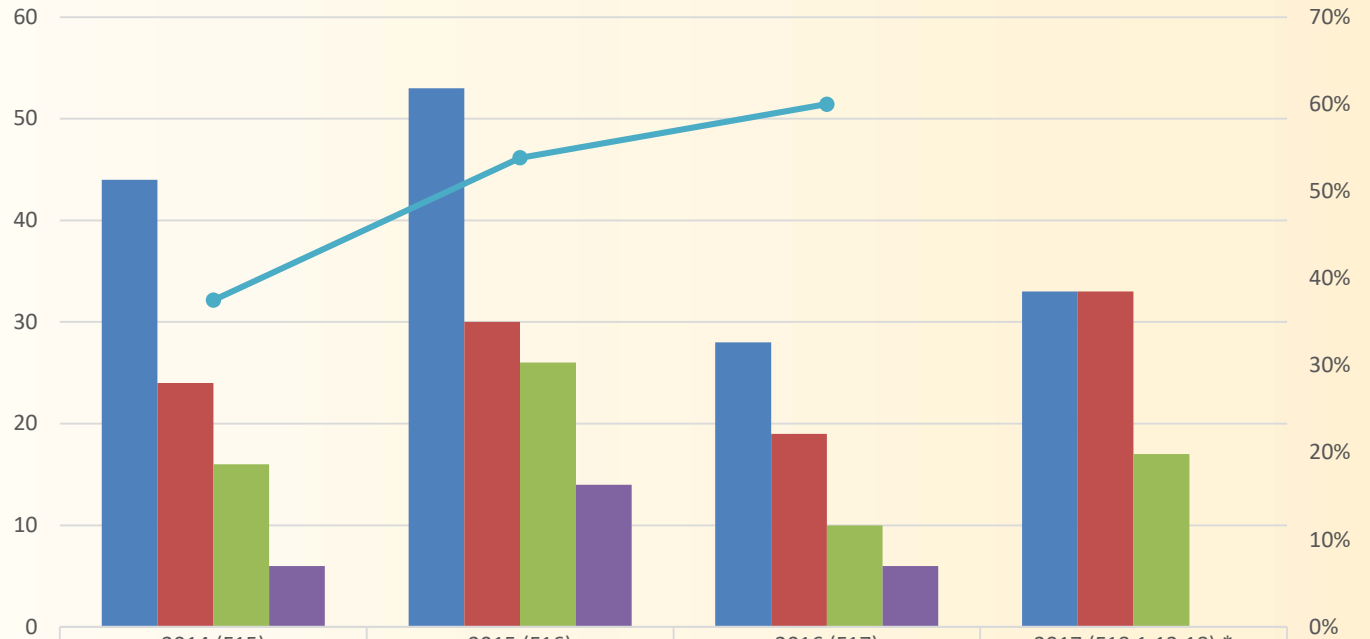


WAYNE STATE UNIVERSITY

C² Pipeline
Admissions Data

PY2014 to Present

12th Graders Who Attended IPE Camp

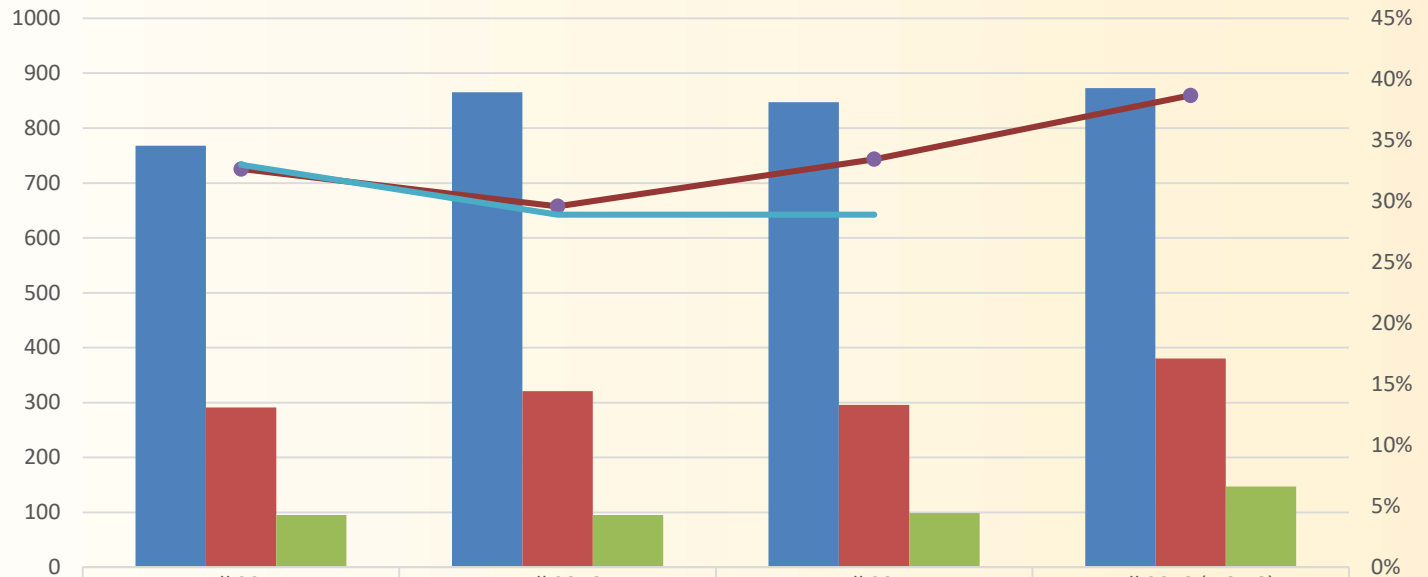


	2014 (F15)	2015 (F16)	2016 (F17)	2017 (F18 1.12.18) *
Eligible to Apply	44	53	28	33
Completed Application to WSU	24	30	19	33
Acceptance to WSU	16	26	10	17
Attending	6	14	6	0
Percentage Attending	38%	54%	60%	0%



All Schools with a C² Presence

Schools with C² Presence

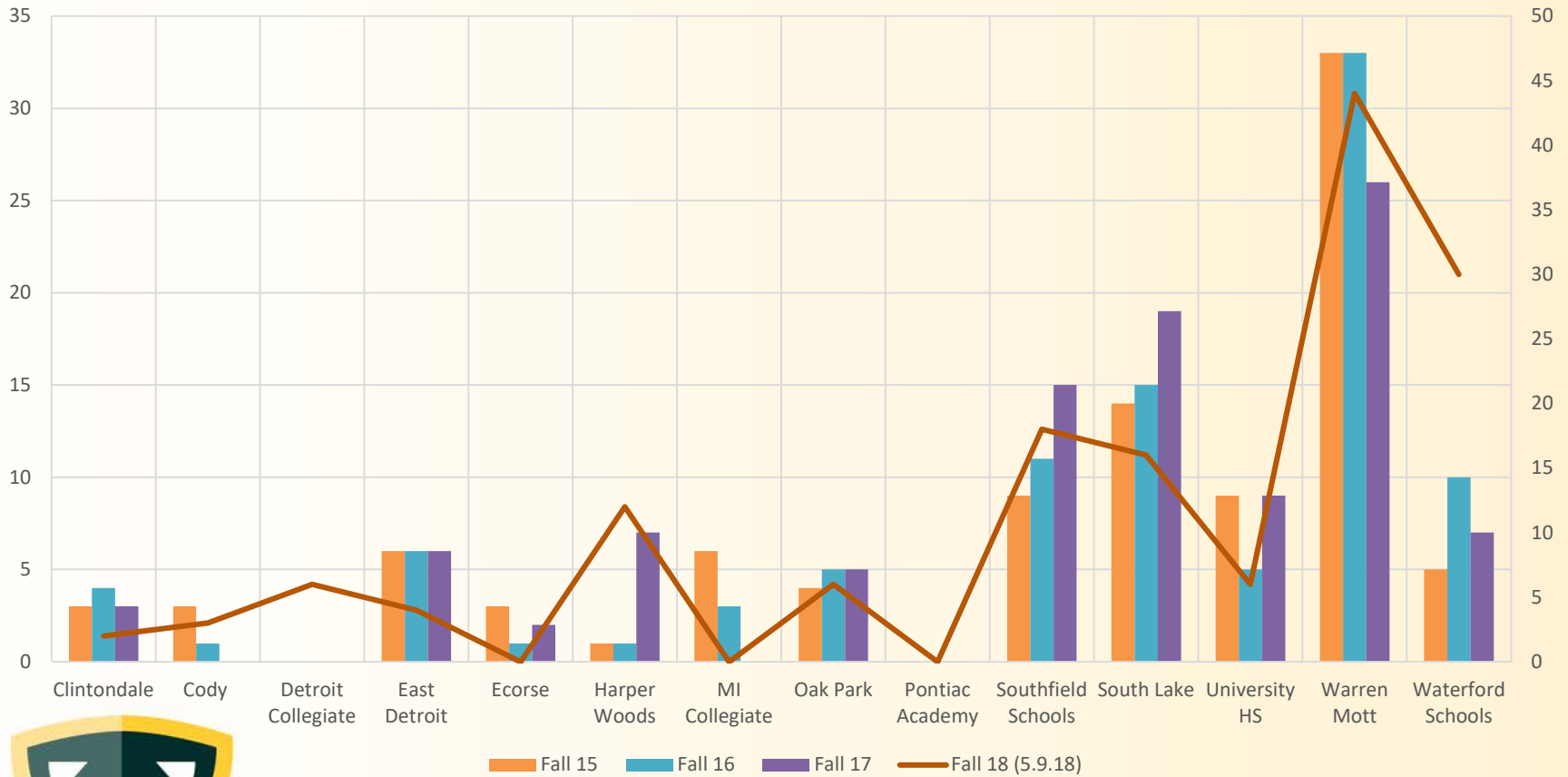


	Fall 2015	Fall 2016	Fall 2017	Fall 2018 (5.9.18)
Application	768	865	847	873
Admit	291	321	296	380
Registrations	95	95	99	147
% Registered to Admit	33%	30%	33%	39%
WSU Yield	33.0%	28.9%	28.9%	



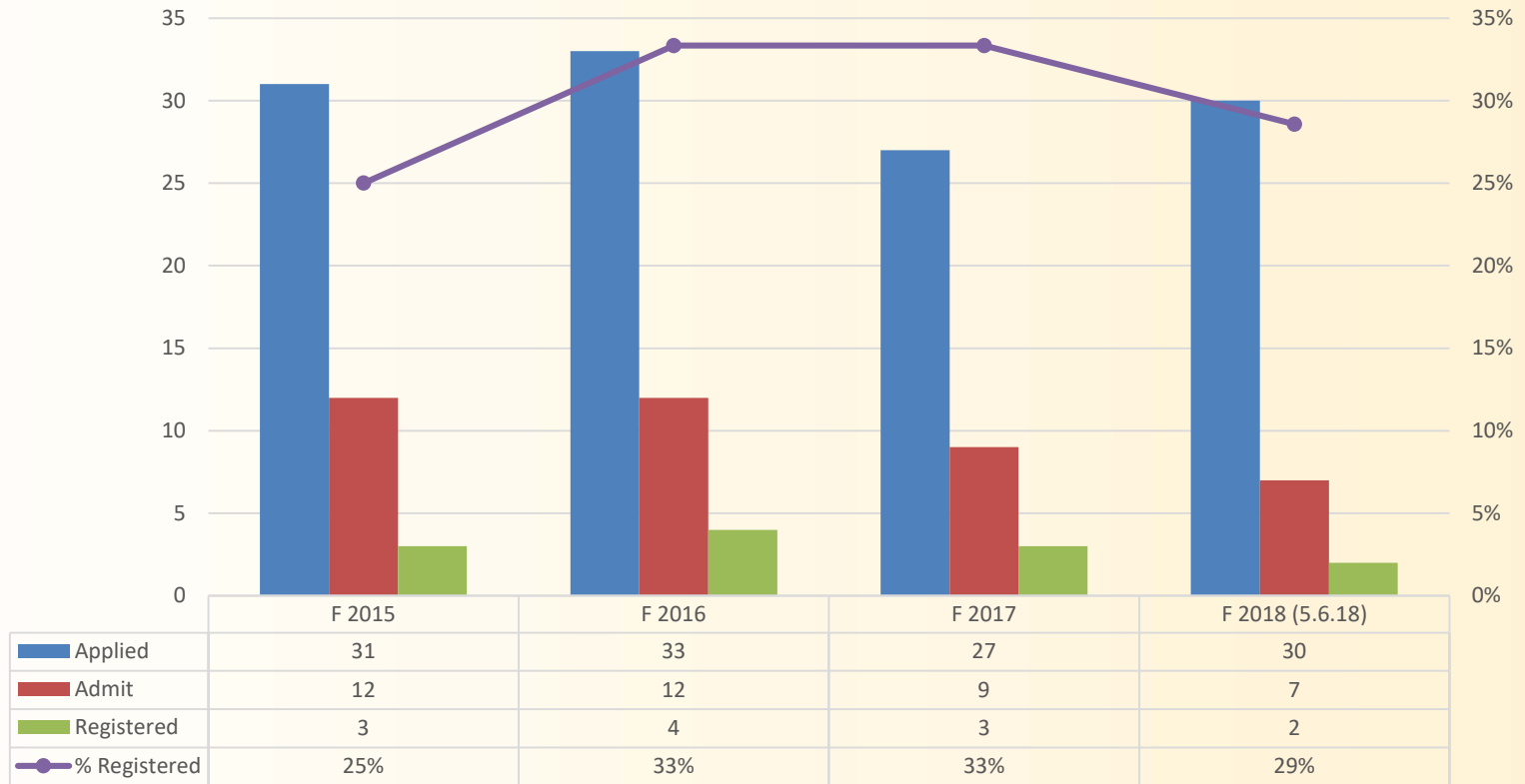
C² Pipeline Site Comparison of Students Attending Wayne State

Registered Students by Pipeline School



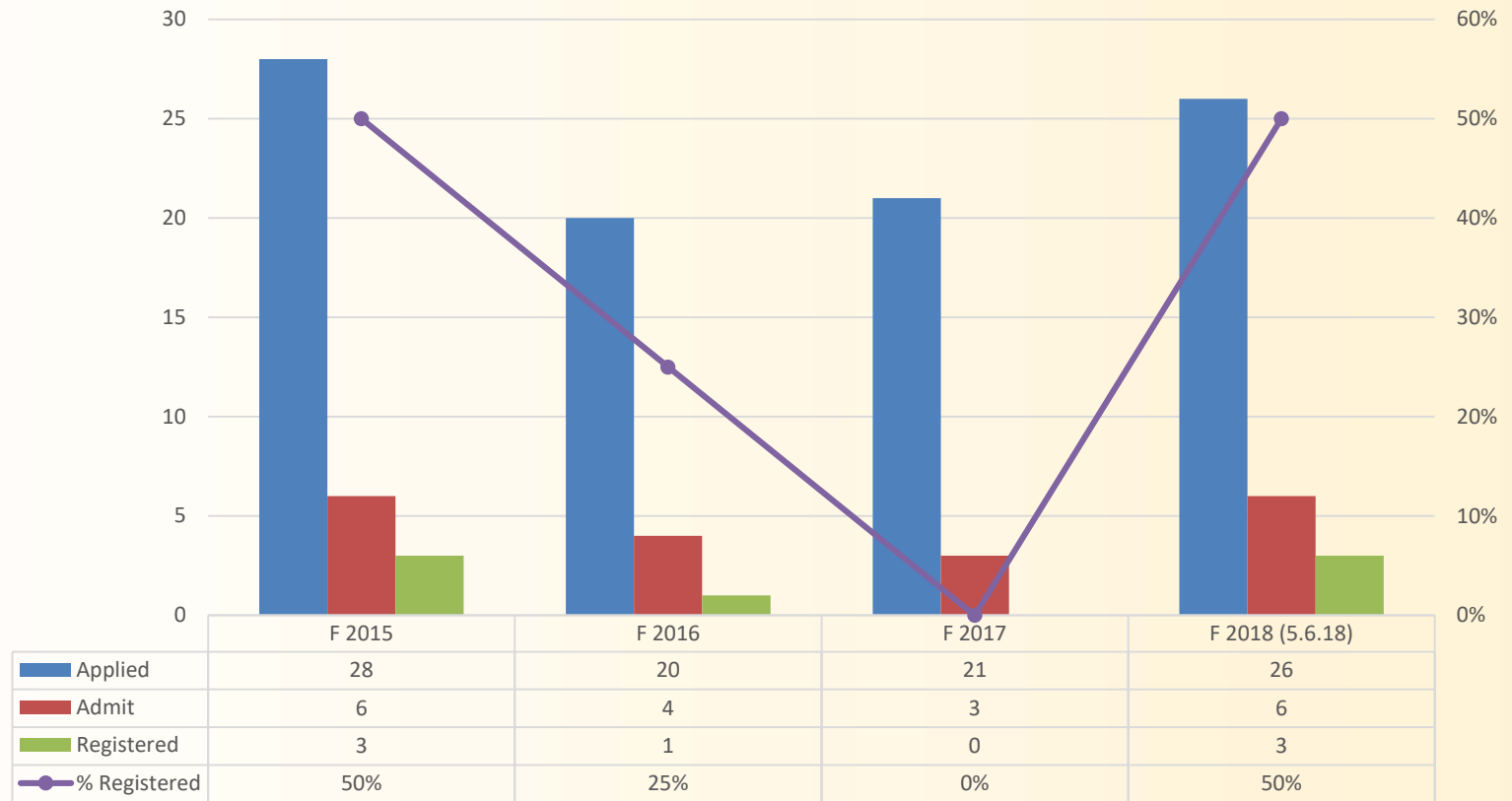
C² Pipeline Site

Clintondale High School



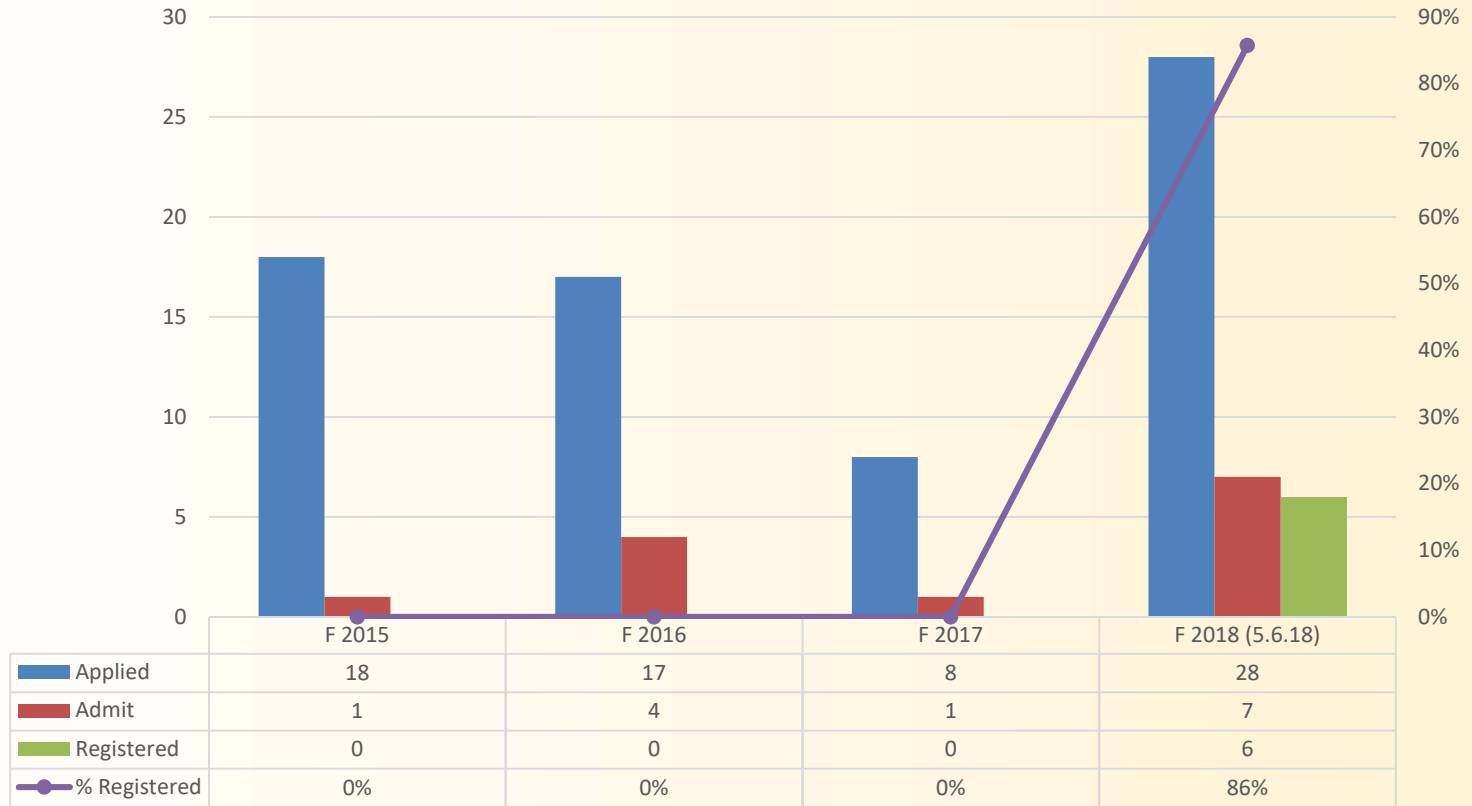
C² Pipeline Site

Cody Medicine and Community Health



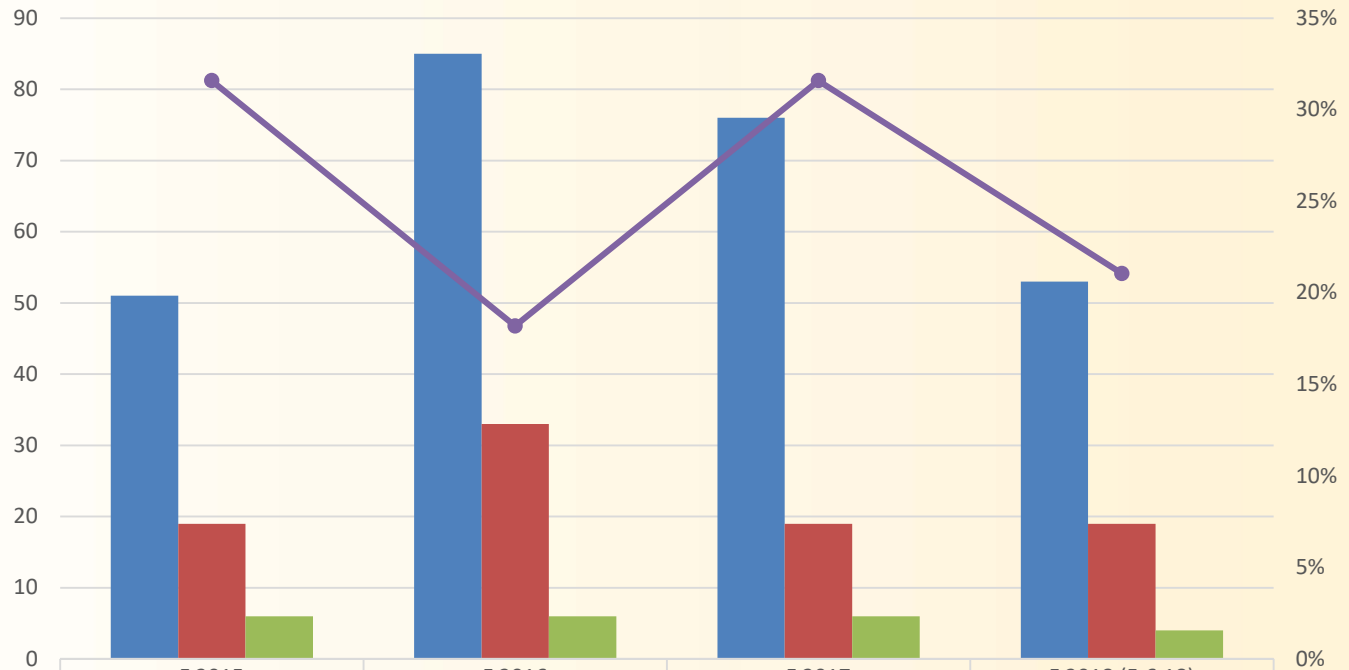
C² Pipeline Site

Detroit Collegiate Prep



C² Pipeline Site

East Detroit High School

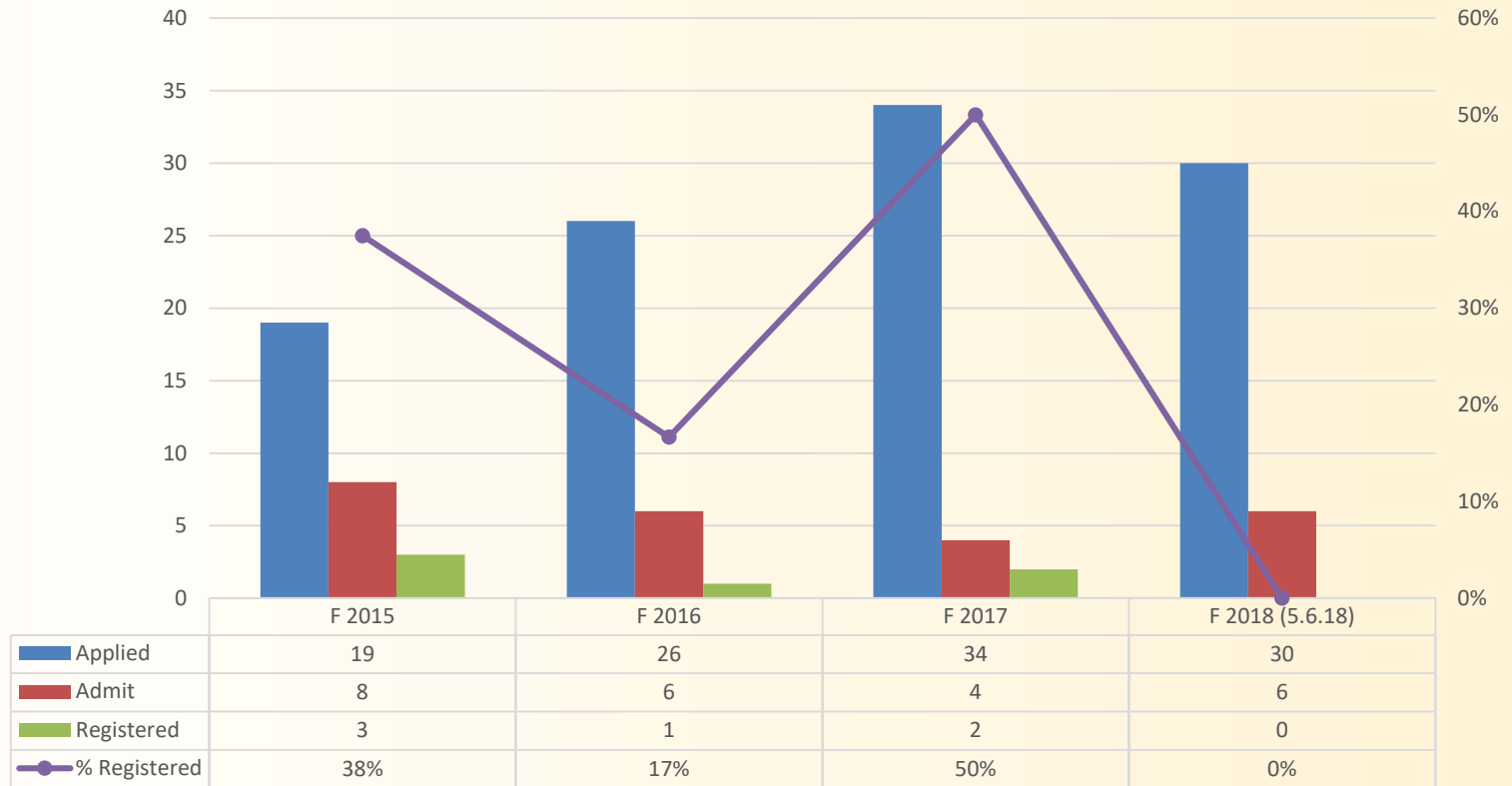


	F 2015	F 2016	F 2017	F 2018 (5.6.18)
Applied	51	85	76	53
Admit	19	33	19	19
Registered	6	6	6	4
% Registered	32%	18%	32%	21%



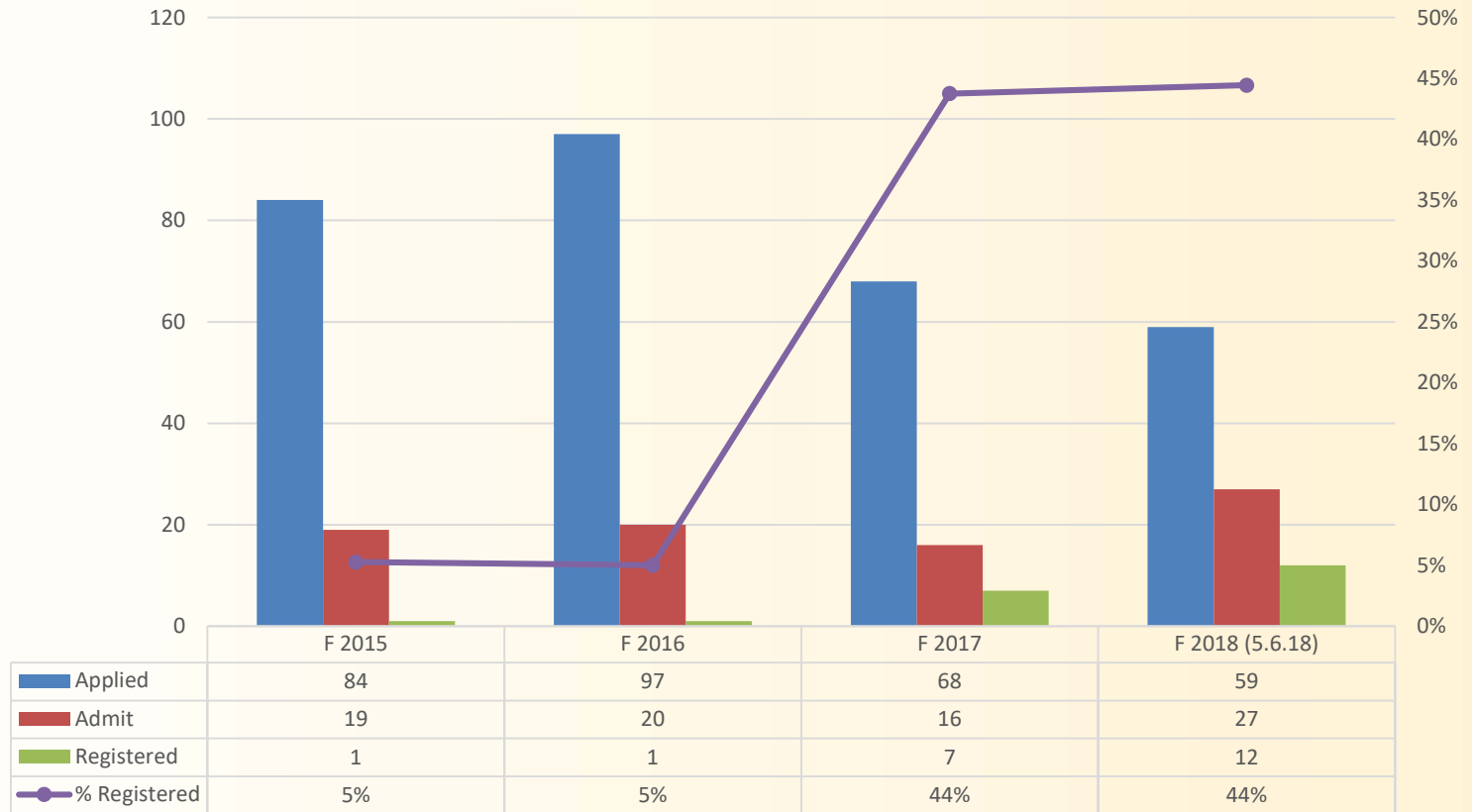
C² Pipeline Site

Ecorse High School



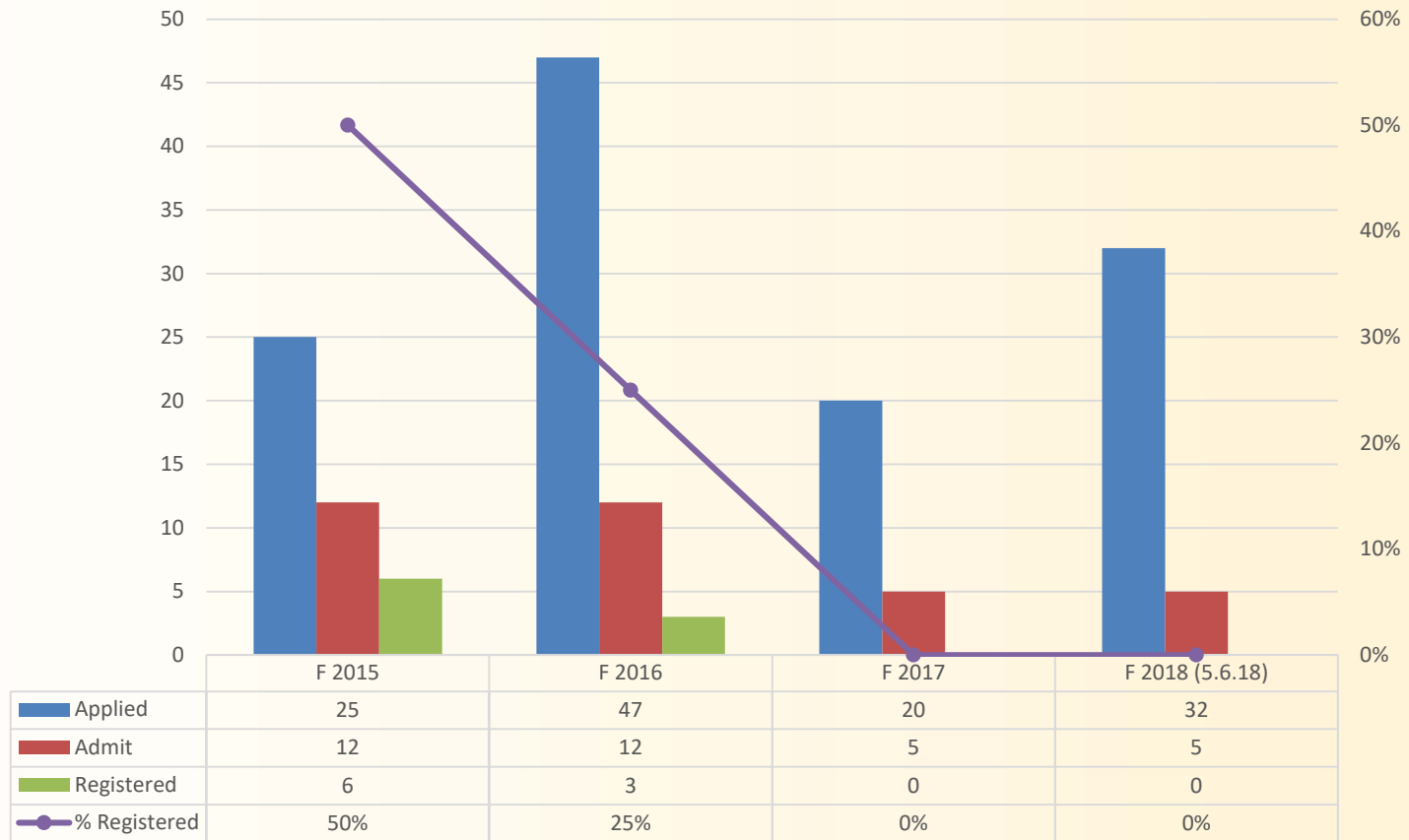
C² Pipeline Site

Harper Woods High School



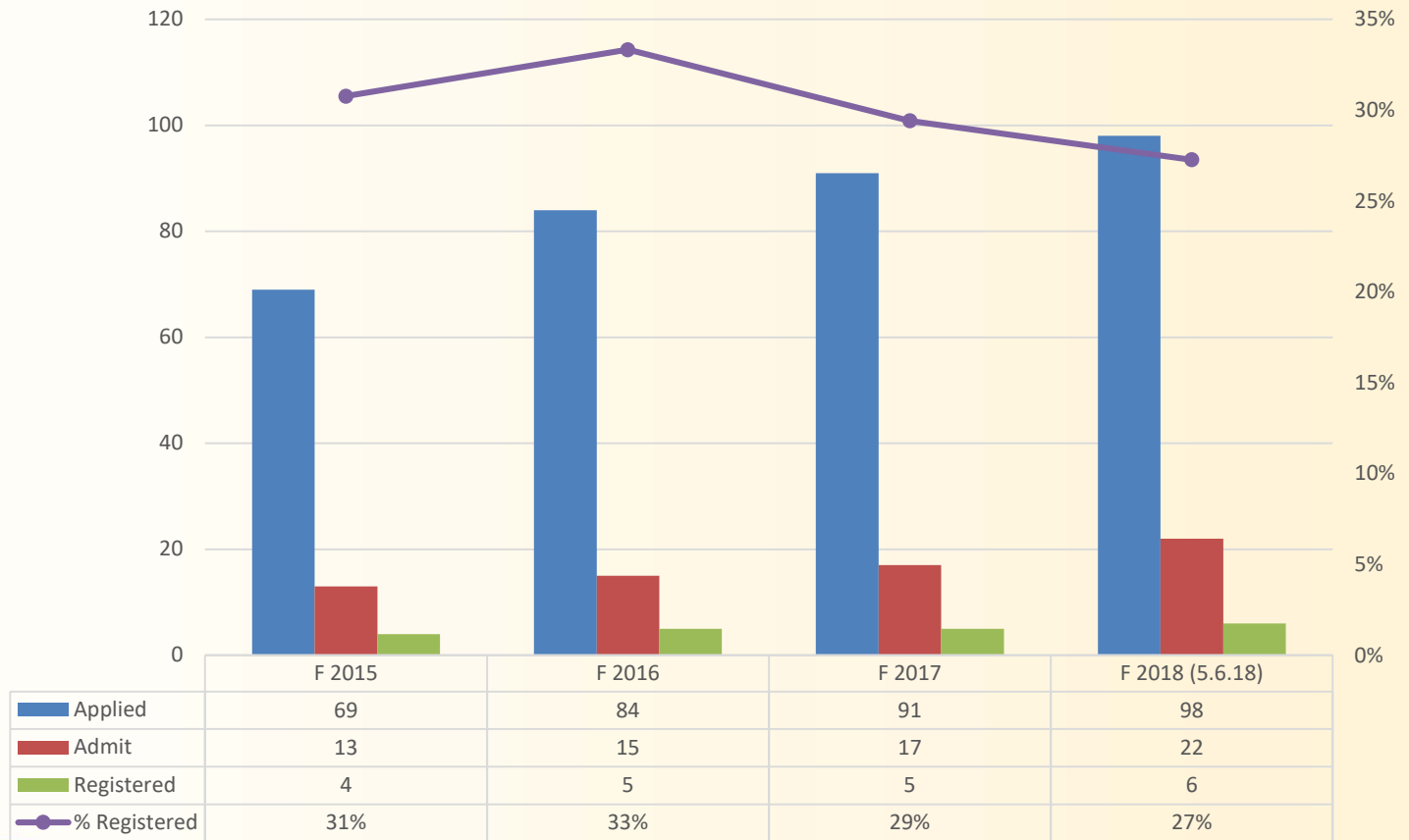
C² Pipeline Site

Michigan Collegiate High School



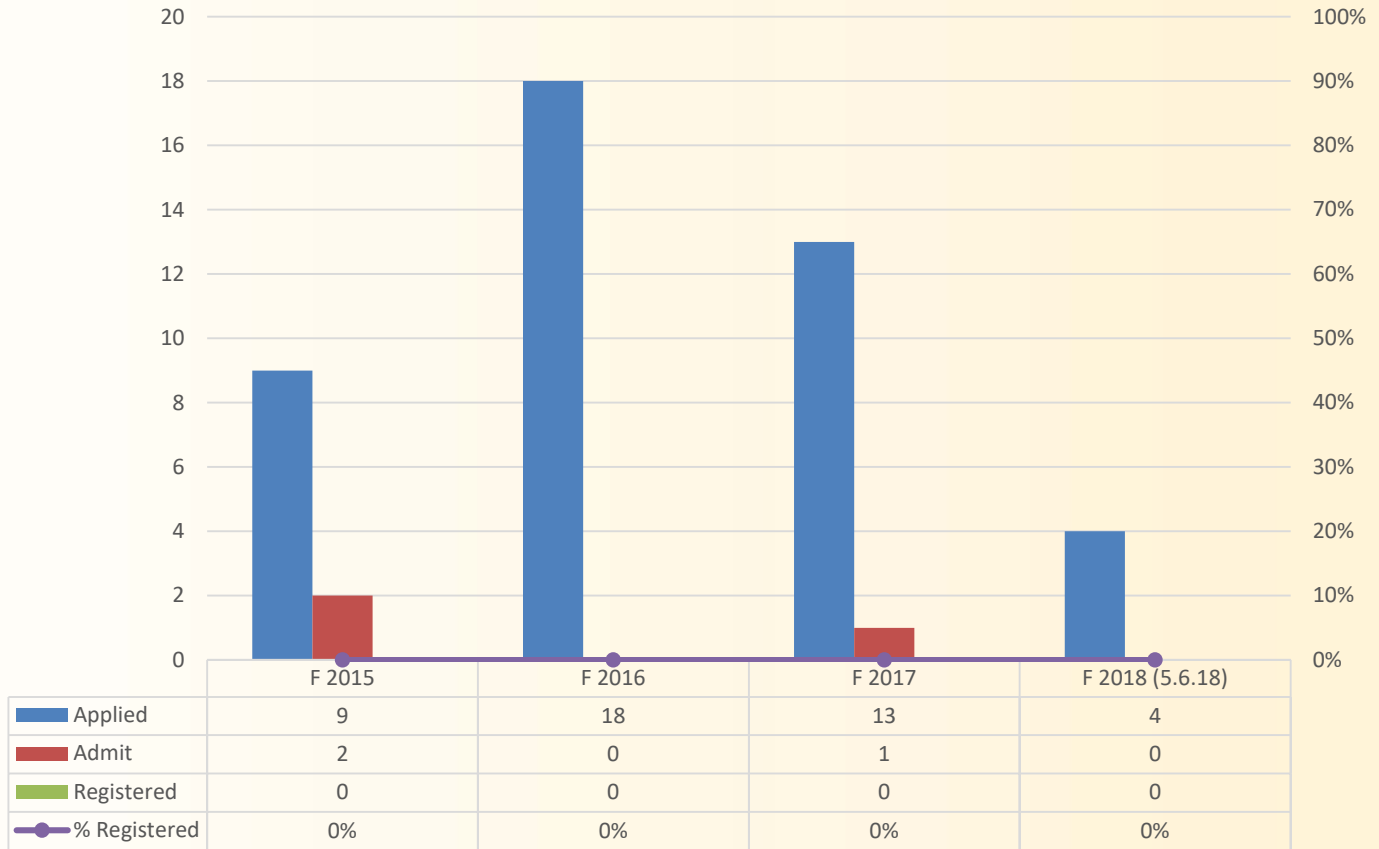
C² Pipeline Site

Oak Park High School



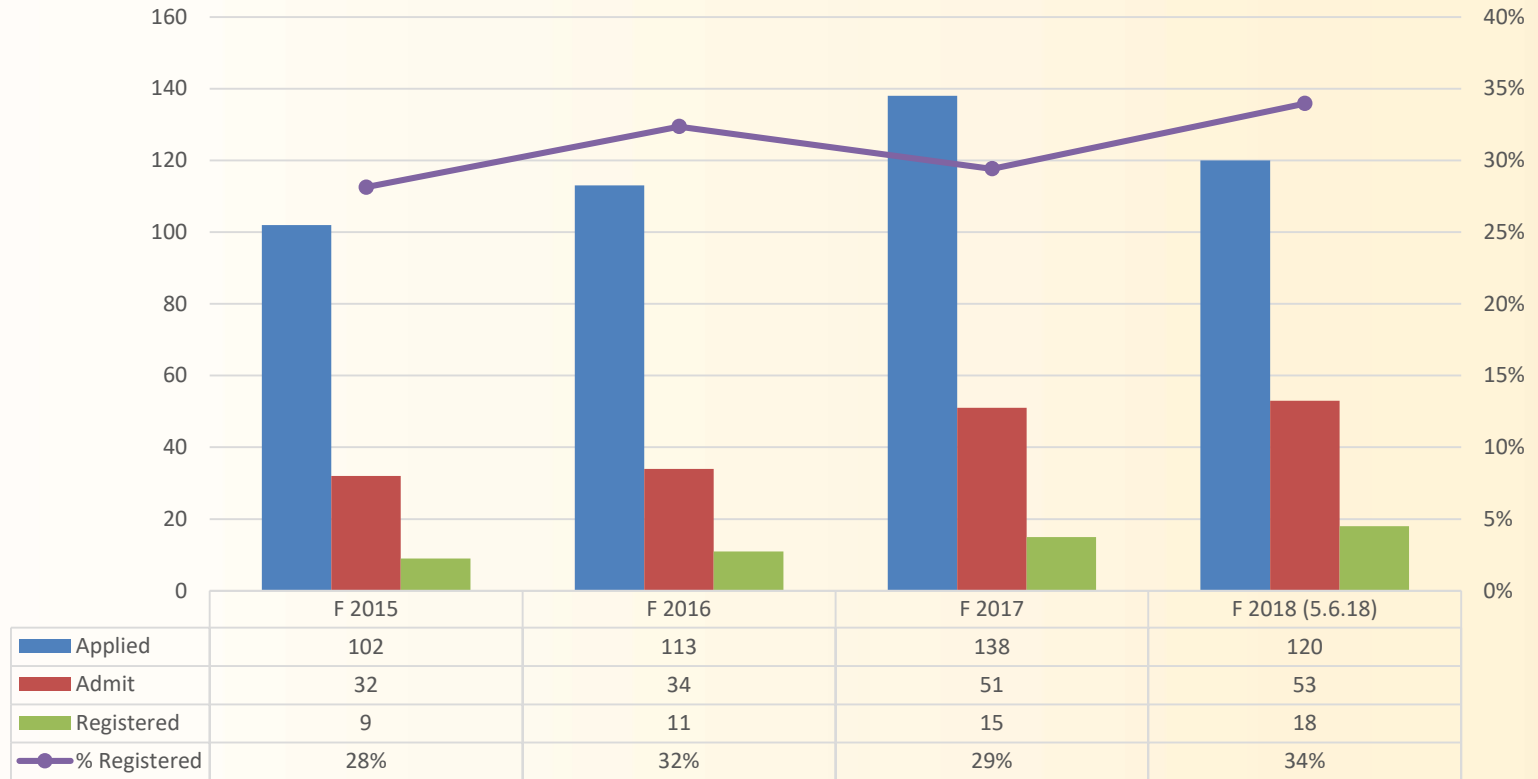
C² Pipeline Site

Pontiac Academy for Excellence



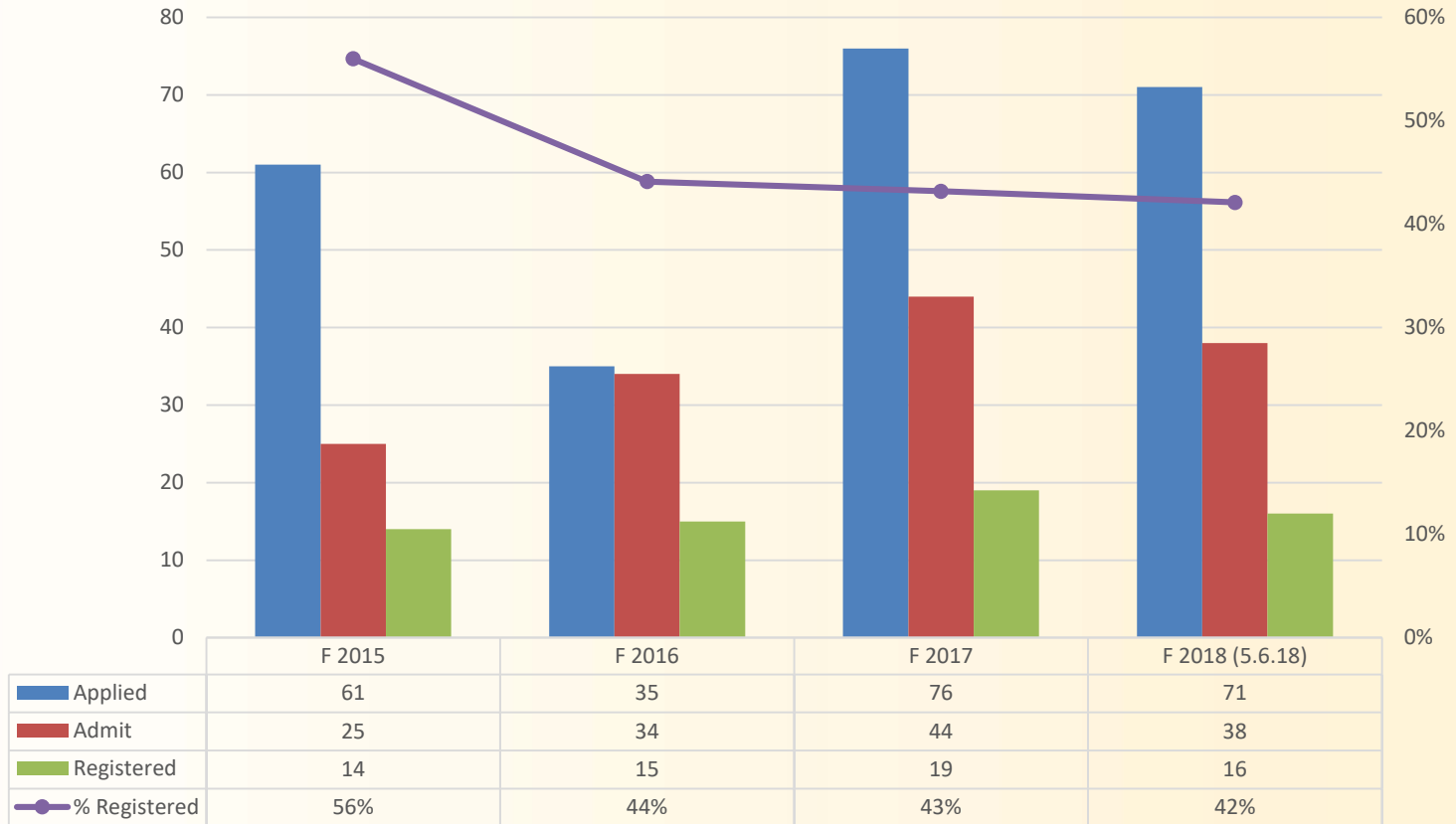
C² Pipeline Site

Southfield Schools
Lathrup/A&T and SRAC



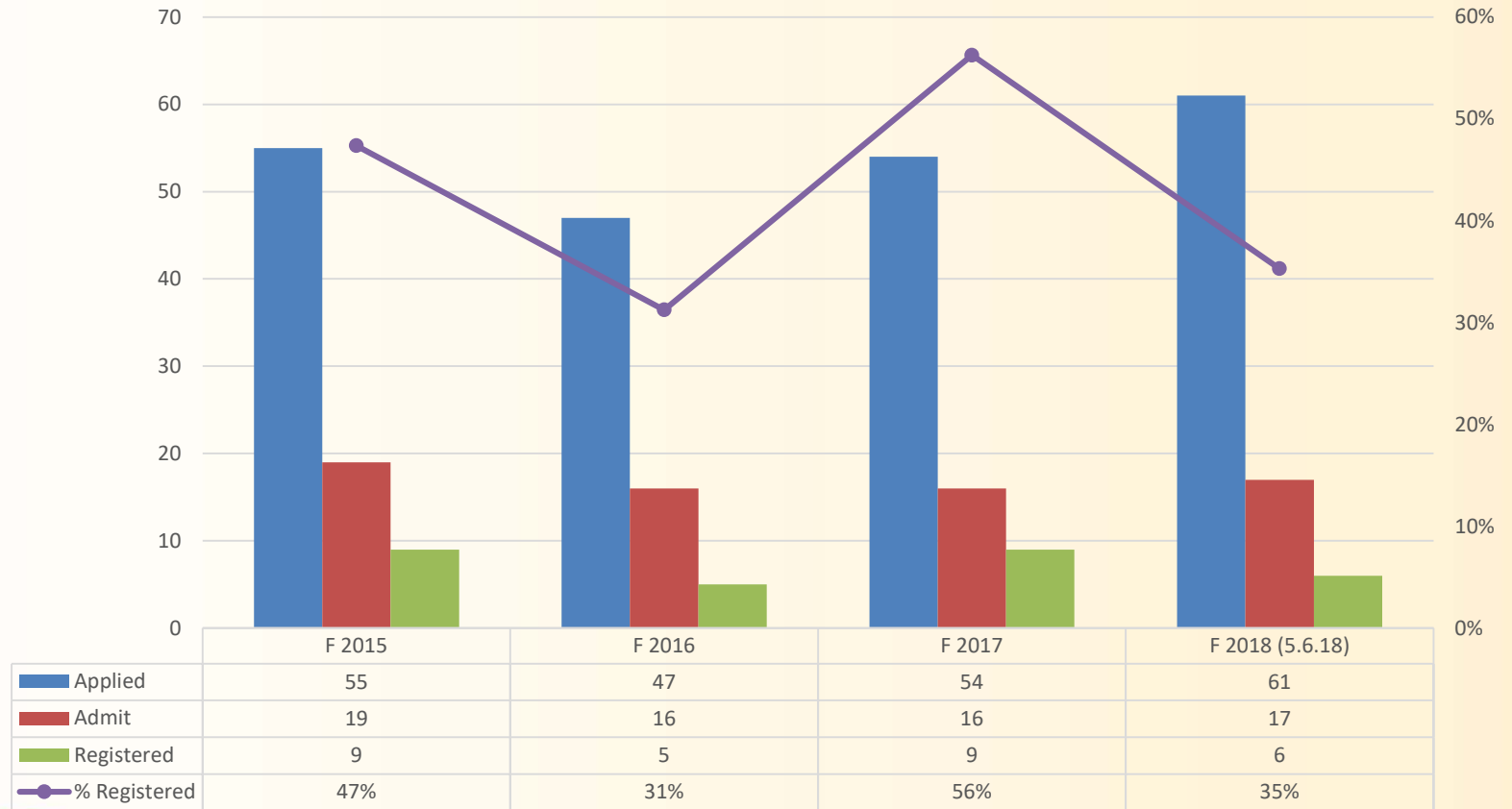
C² Pipeline Site

South Lake High School



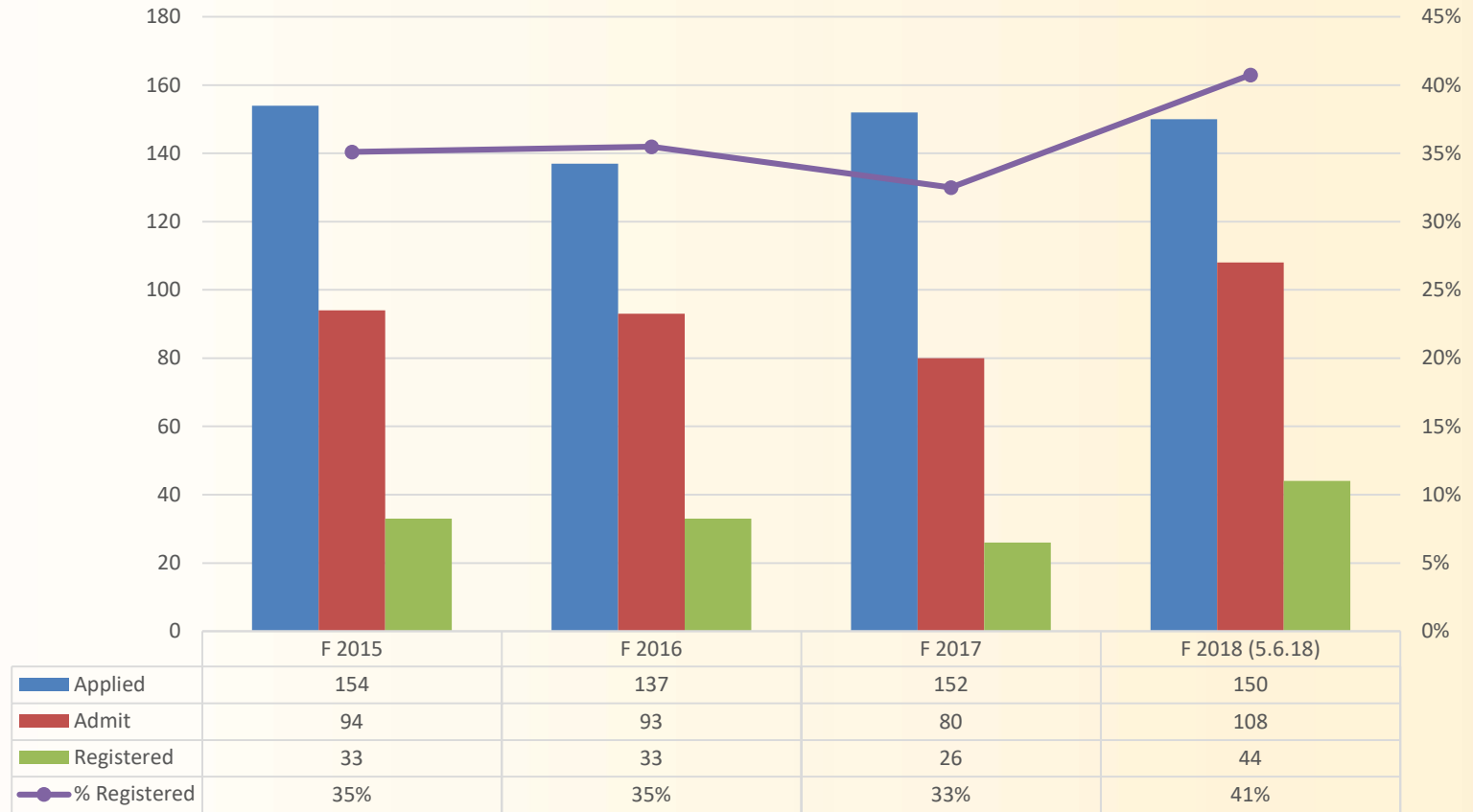
C² Pipeline Site

University High School - Ferndale



C² Pipeline Site

Warren Mott High School



C² Pipeline Site

Waterford School District
Mott & Kettering

